

# YANGTZE RIVER DELTA ROADSHOW CENTER

ARCHITECTURE

SHANGHAI, CHINA 2019, BUILT

Competition, WON

## PROGRAM

Retails, Offices, Congress Center

Tot Built Area: 15.400 m<sup>2</sup>

## CLIENT

Shanghai Construction Group Jinshan Development Co., Ltd

## BUDGET

13.5M€

## PHASE

BUILT

Yangtze River Delta Roadshow Center is a renovation project of an old group of buildings which used to locate the Shanghai printing silk. The total area is 118 acres, which is animated by sequences of different typology of public spaces.

The project is located in the southwest direction of Shanghai Maple Jing Town. On three side of the project are river channels.

The overall design presents diversified industrial forms and industrial materials, as bricks and deployed metal. It aims to establish a center for Technology and Industrial agglomeration, a vibrant industrial Park, with a multi-functional theatre space combining humanities and interaction.









# WE WORKS LAB

ARCHITECTURE

SHANGAI, CHINA 2016, BUILT

## PROGRAM

Restructuration of an old factory  
Offices, Retail

TOTAL SURFACE: 5500m<sup>2</sup>

The existing site is a combination of a brick historical building with further industrial additions that have been made over the years. The reception is located in this in-between zone of the old and new. Linehouse played with this narrative in the design. The reception counter is clad in heritage wood paneling, surrounded by a concrete base. A bronze metal structure hangs lighting and creates leaners. Behind the reception, guests are greeted with a neon sign 'Ring For Service' contained in a cabinet of curiosities, painted in a light blue.









# COTTON PARK

ARCHITECTURE / RESTRUCTURATION

CHANGZHOU, CHINA 2020, BUILT

## PROGRAM

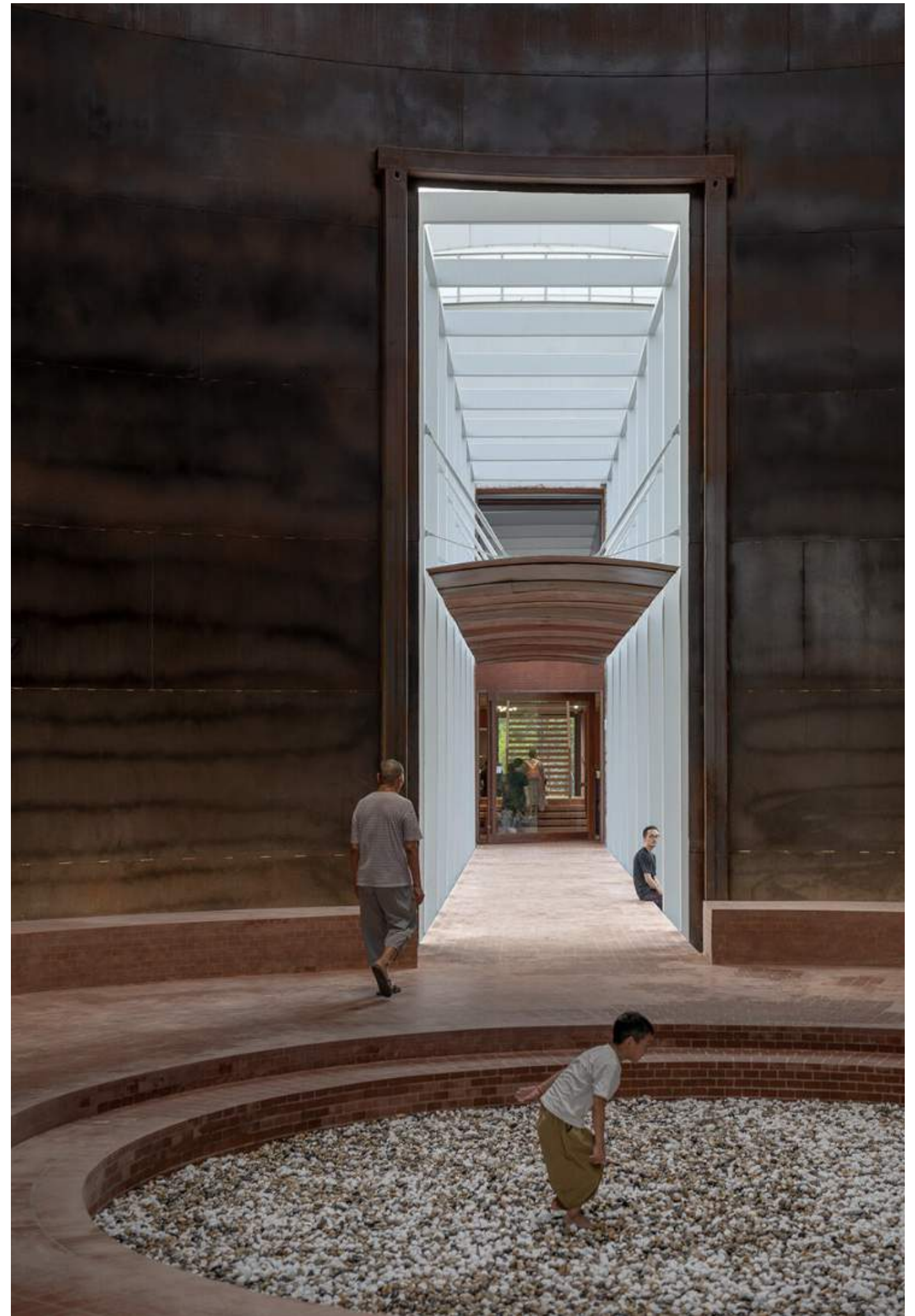
Offices, retail

TOTAL SURFACE: 4500m<sup>2</sup>

Our goal was to breathe new life into the city and foster community engagement by establishing a place where people could gather. Simultaneously, we aimed to create a versatile place capable of hosting various cultural events and gatherings, enriching the local experience. The four tanks possess a distinctive quality due to their initial purpose, primarily designed to facilitate industrial processes rather than being centered around the human scale.









# CANAL HUB 158

ARCHITECTURE

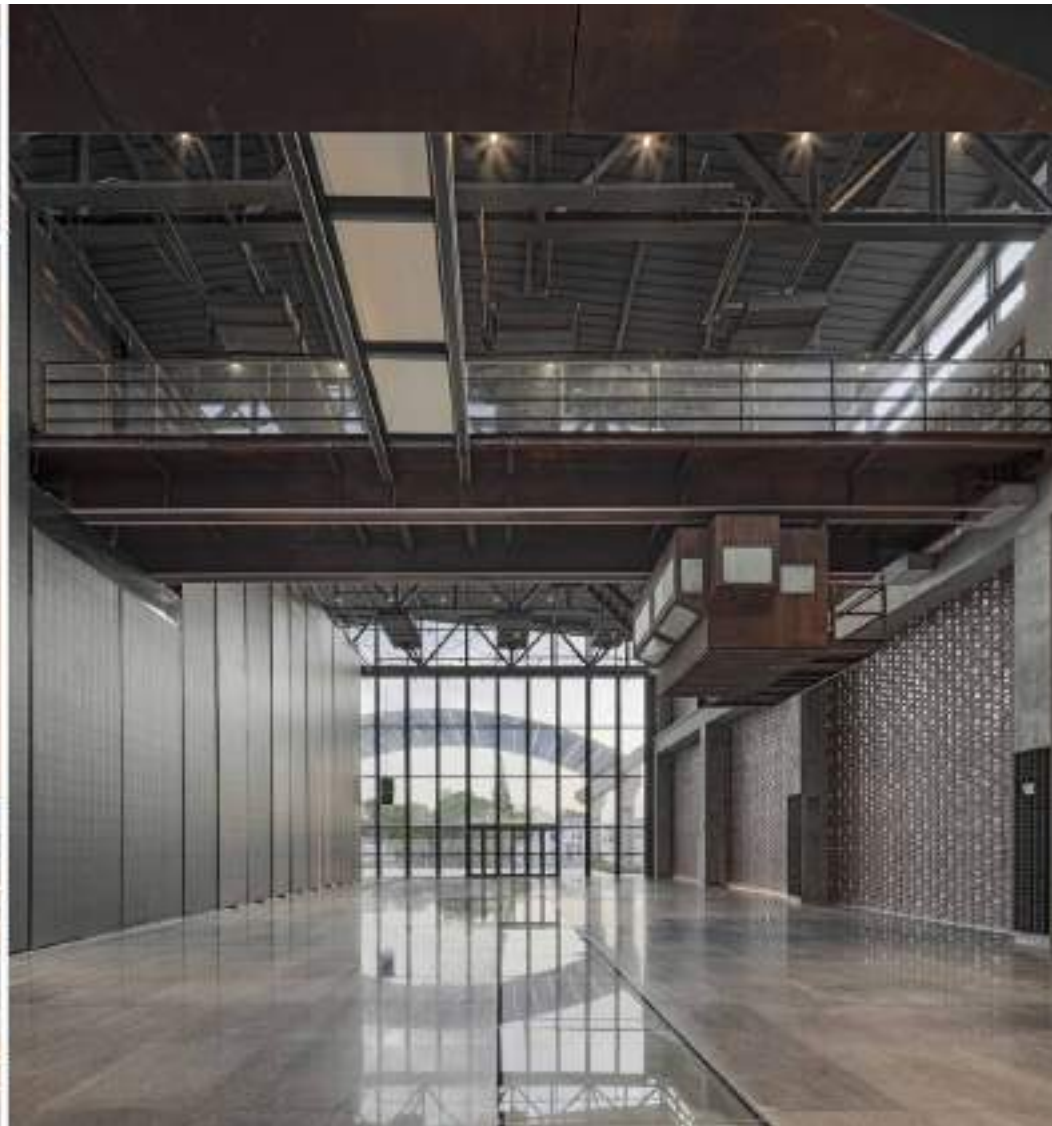
WU XI SHI, CHINA 2021, BUILT

## PROGRAM

Offices and retails

TOTAL SURFACE: 35.000m<sup>2</sup>

The Canal Hub 1958 project is situated on the former site of the Wuxi Iron and Steel Plant, located along the ancient canal. The historical district along the ancient canal has a rich history, carrying the legacy of Wuxi's early settlers who lived by the river, established the city along the water, and relied on the river for their livelihoods. It has nurtured distinctive features such as the Turtleback City and the Qingming Bridge Water Alleys, representing the unique culture of the Jiangnan Canal Water Town. The predecessor of the steel plant was the Wuxi Local State-owned Iron and Steel United Company, founded in 1958, and it has always been a pivotal industrial landmark enterprise in Wuxi. This place carries important memories of the city's development and records the struggles and dreams of a generation.









# DATA CENTER - TOULOUSE

ARCHITECTURE

TOULOUSE, FRANCE 2024, IN PROGRESS

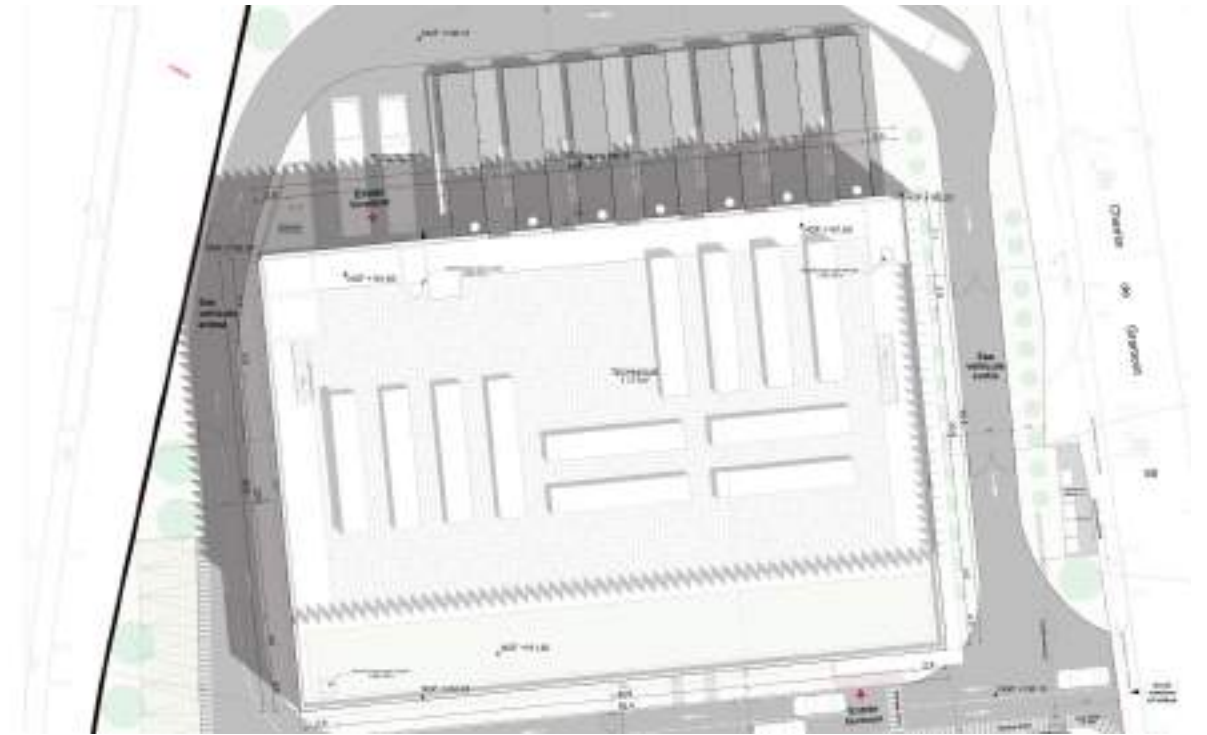
## PROGRAM

Data Center and Offices

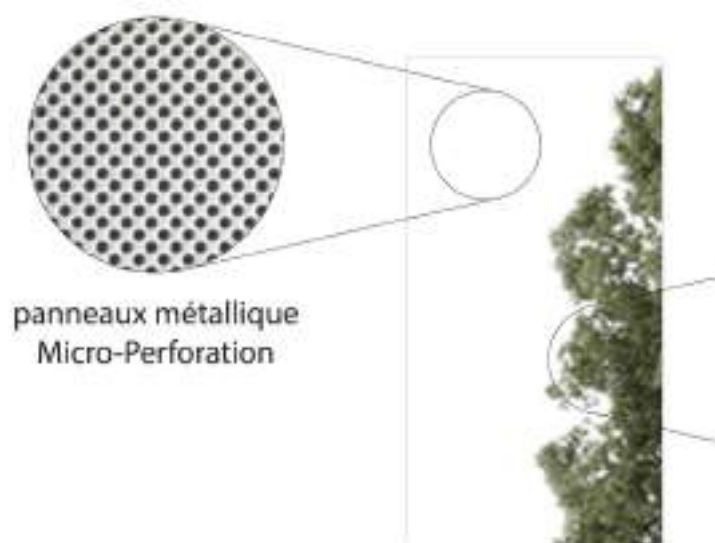
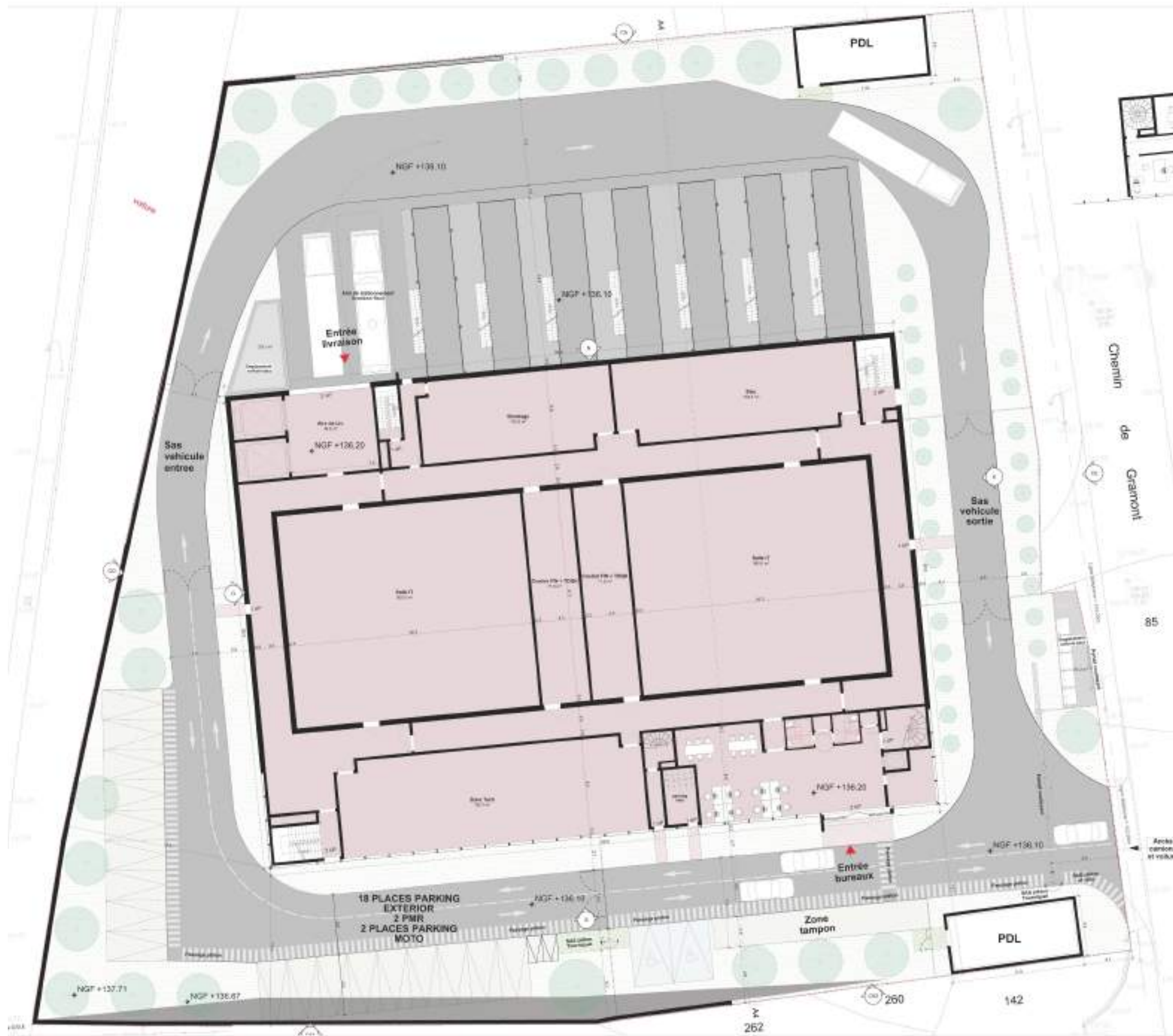
TOTAL SURFACE: 9.000m<sup>2</sup>

CLIENT: VOLTEKKO

MASTER PLAN







SCHEMES for the FACADE BLADES



# DATA CENTER BAIDU

ARCHITECTURE

Yangquan, CHINA 2023, BUILT

## PROGRAM

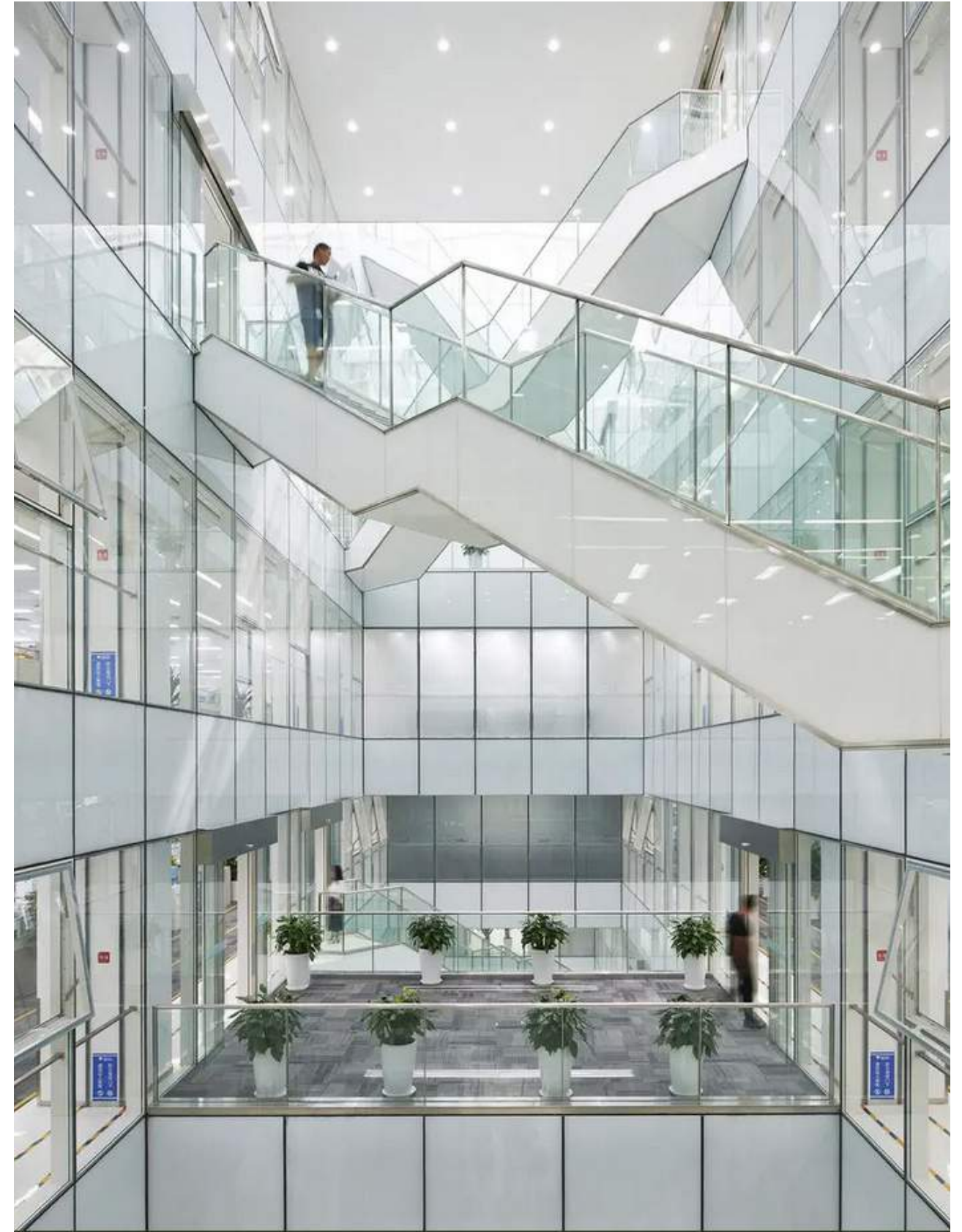
Data Center and Offices

TOTAL SURFACE: 120.000m<sup>2</sup>

CLIENT: Yangquan Economic Development Zone, Shanxi  
Provinc









# DATA CENTER LA COURNEUVE

ARCHITECTURE

La Courneuve (Seine-Saint-Denis), FRANCE 2023, UNDER CONSTRUCTION

## PROGRAM

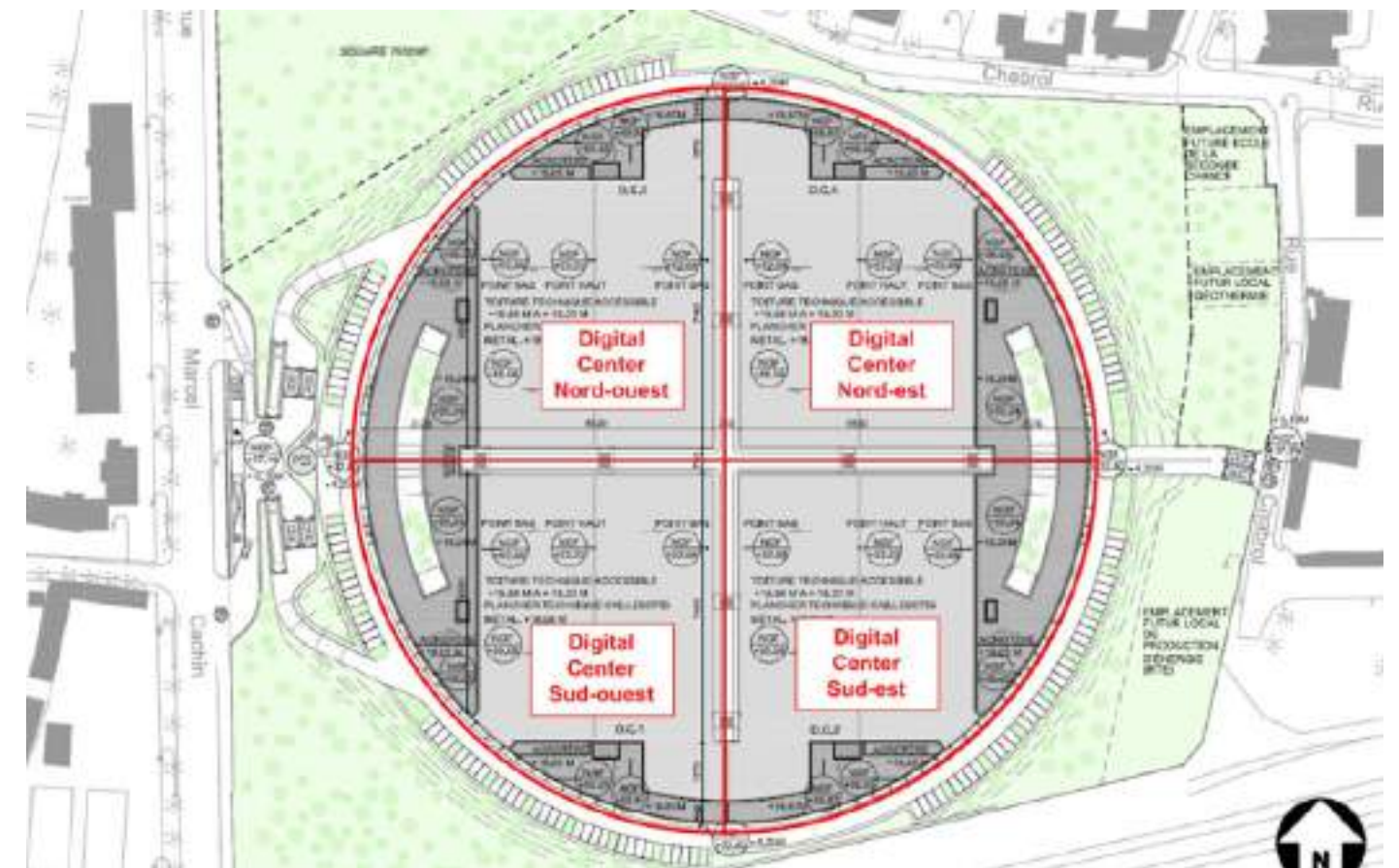
Data Center and Offices

TOTAL SURFACE: 115.000m<sup>2</sup>

CLIENT: Yangquan Economic Development Zone, Shanxi  
Provinc









# ECO BUILDING

ARCHITECTURE

SHANGHAI, CHINA 2020, IN PROGRESS

Competition WON

## PROGRAM

Office Headquarter Including two restaurant and a conference hall

TOTAL SURFACE: 12.700m<sup>2</sup>

## CLIENT

Shanxi Baotai real estate development company

## BUDGET

30M€

## PHASE

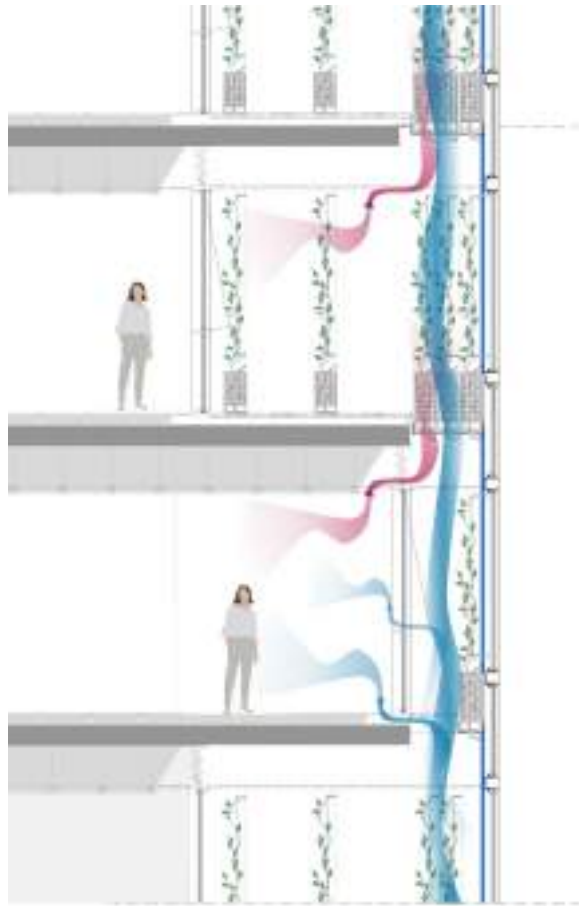
Competition WON - IN PROGRESS

The project uses all the last technology and a careful savoir-faire in order to respect the environment. A double façade create a thermic filter and at the same time a space use to make small cultivations.

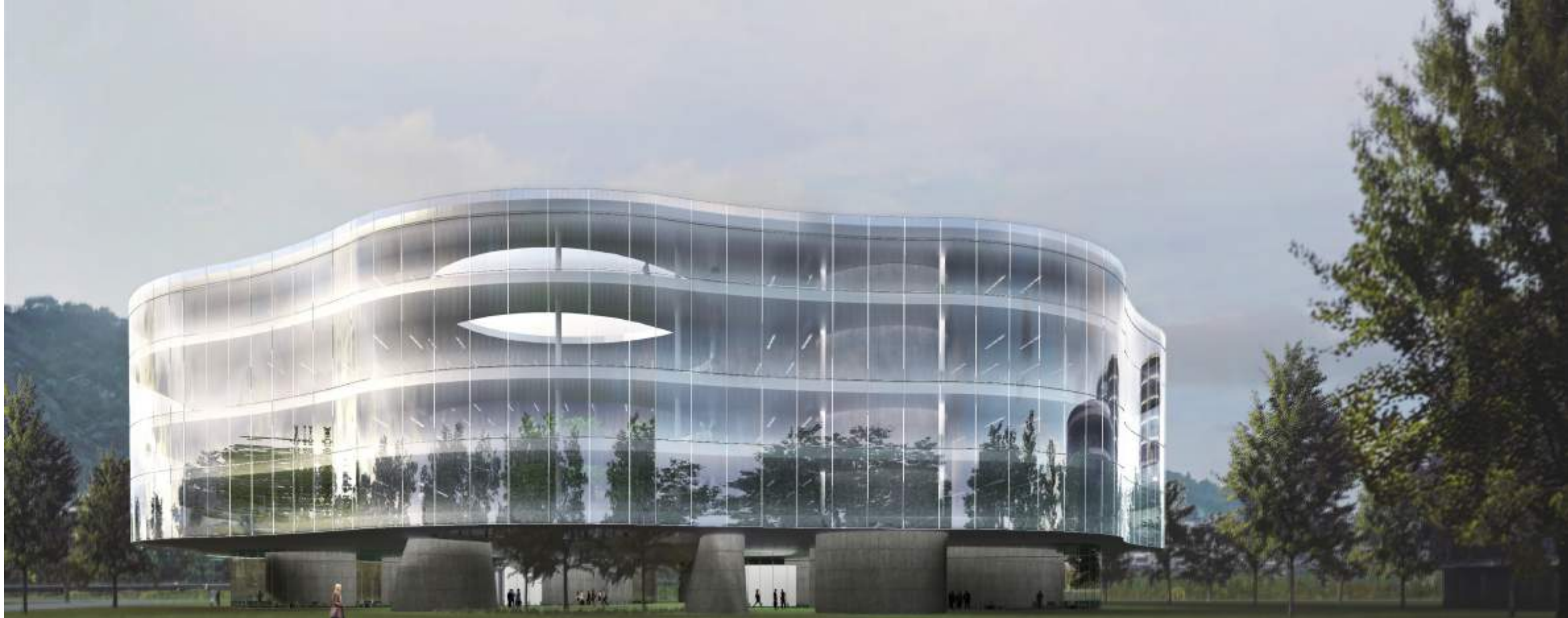
The structure is in wood and we minimize the number of columns on each side to give the “floating” effect on ground floor











## APOLLOMICS RESERCH CENTER

Hangzhou China

100,000 M²

Office Factory



The project is located in the international airport area of Hangzhou Xiaoshan Airport, with a site area of 59 mu, including Crown Biomedical's research headquarters and pharmaceutical production plant.

The basic concept of the park is divided into 4 directions, namely: introduction of natural ecology, collision of imagination and inspiration, efficient communication, and a sense of community belonging

This scheme provides a free and open plane, including the experimental space, where everyone works in an open and barrier-free environment. The intention of the building is to provide a flexible workspace that can be easily arranged and adjusted. At the same time, it encourages communication among colleagues at work, which helps to improve work efficiency and inspire inspiration.

In the park site, various sports facilities are provided for employees to improve their physical fitness, increase their satisfaction and loyalty to the company, and improve work efficiency.

The building itself is an open and easy-to-communicate space. Combined with the site landscape and sports facilities, it forms a good interaction, promotes a vibrant community atmosphere, and improves the happiness and sense of belonging of the company's employees.



## ARCHITECTURE

SHANGHAI, CHINA 2021, IN PROGRESS

Competition WON

## PROGRAM

Offices Including: exhibition spaces, conference center

TOTAL SURFACE: 40.000m<sup>2</sup>

## CLIENT

Shanxi Baotai real estate development company

## BUDGET

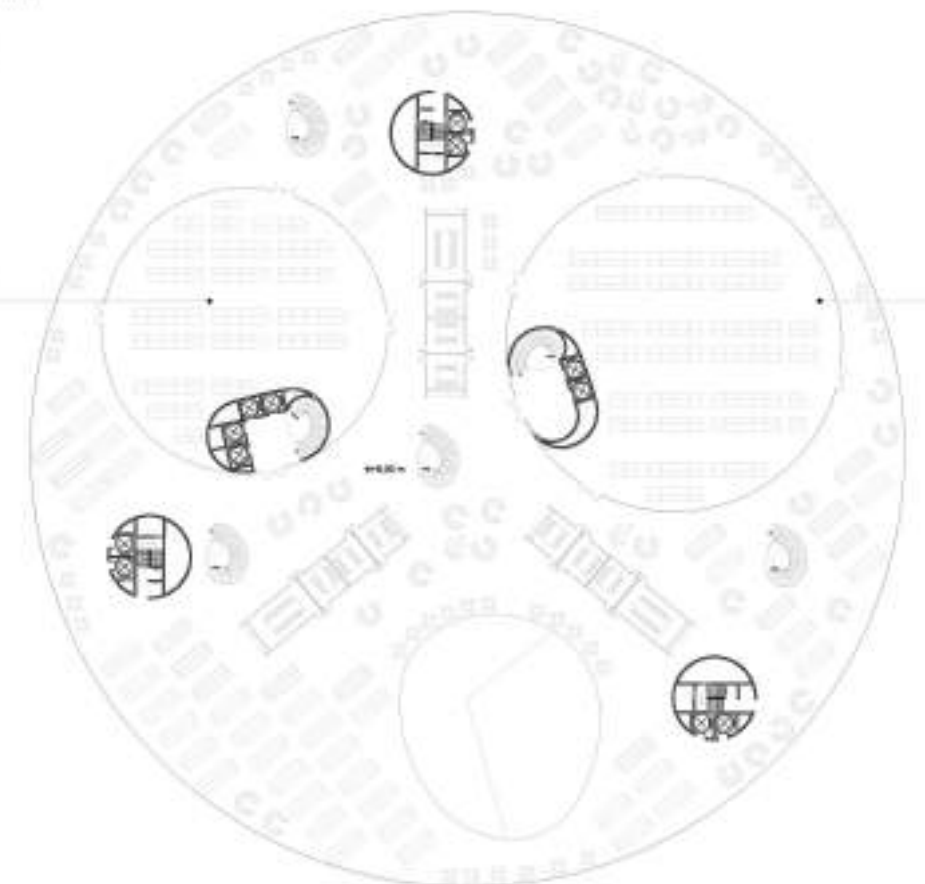
54M€

## PHASE

Competition WON - IN PROGRESS



平面布置圖  
LAYOUT





# GALEO - BOUYGUES IMMOBILIER HEADQUARTERS

ARCHITECTURE

ISSY LE MOLEAUX, FRANCE 2012, BUILT

Competition, WON

## PROGRAM

Headquarters Office for Bouygues Immobilier

TOTAL SURFACE: 6.000m<sup>2</sup>

## CLIENT

Bouygues Immobilier

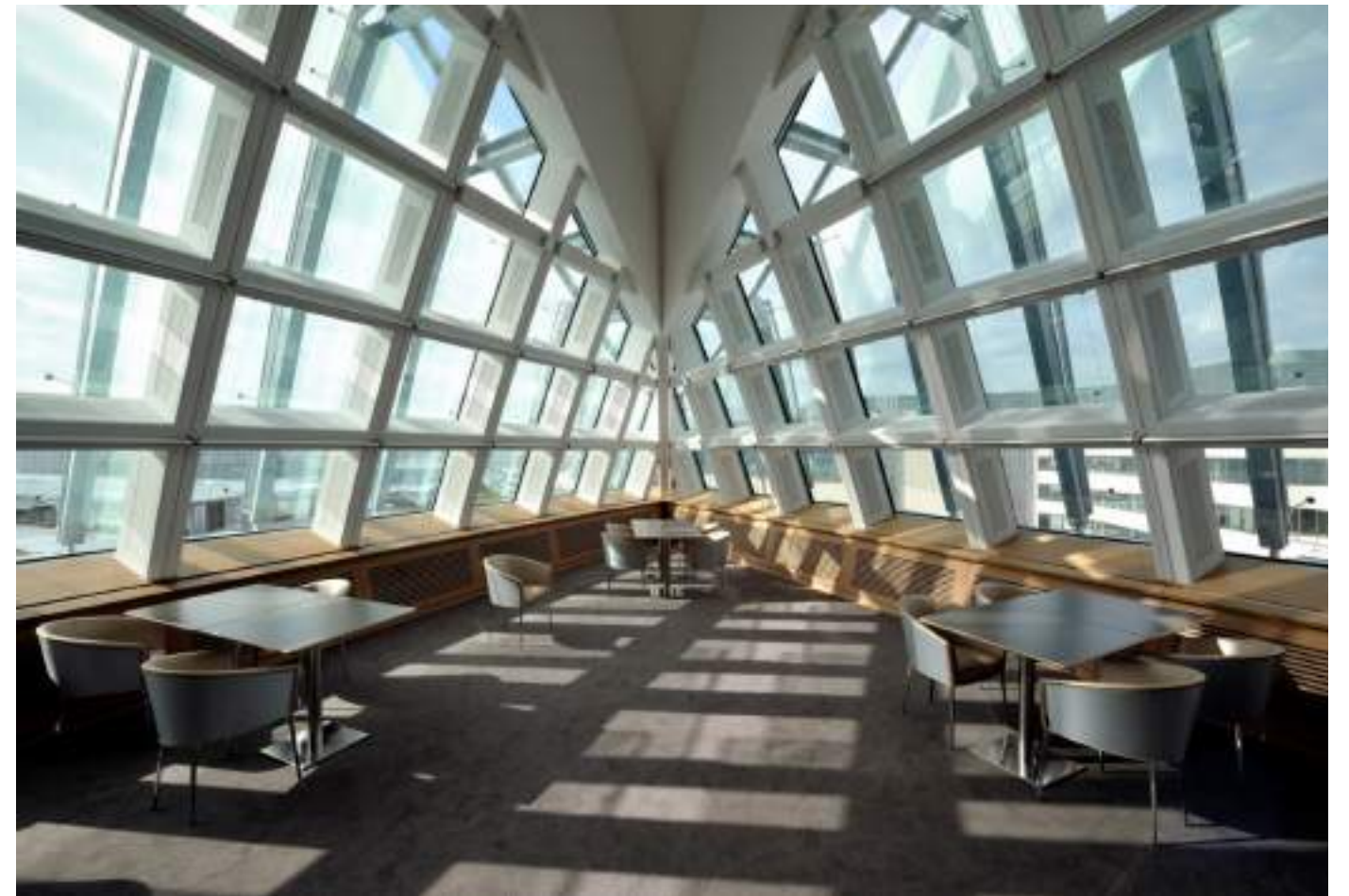
## BUDGET

20M€

## PHASE

BUILT

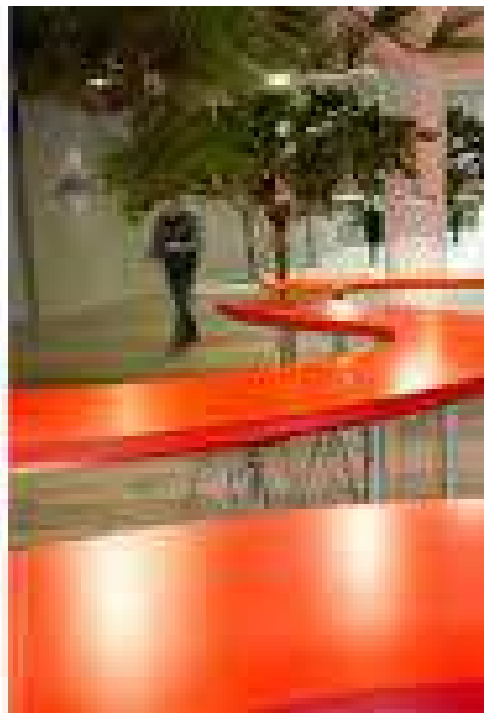
The Galeo Building, the head office of French property development company, Bouygues Immobilier, marks the entry point to the town of Issy-les-Moulineaux from Paris. It is characterized by an envelope which fits into the urban template like a polished pebble. The geometry of this volume is constituted by a “double skin” of glass scales which plays a practical role, insulating the office floors from fluctuations in environmental temperature and allowing for the opening of broad windows. The interior atmosphere of the offices is soft and light-filled. At night, this crystal becomes a “lamp” visible from the highway, despite it being encircled by large buildings



This project is composed of three buildings along a street. The block has been opened up using a public path crossing the site, and existing workers' houses and mill houses are integrated into the whole. Along the street, two office buildings, Dueo and Trieo, are constructed in contrasting materials. The architect purposely confronted two architectural “expressions”: on the one hand, an elongated mineral element formed from two office buildings “in white”, clad in red fiber concrete made using a mold produced in conjunction with Martin Wallace, and on the other hand, a plain glass building, Galeo, which, as a result, is set off to full advantage. The entire project is HEQ® accredited for its high standard of environmental performance.









# HARBOR PROJECT

ARCHITECTURE

BEIRUT, LEBANON 2014, IN PROGRESS

Competition, WON

## PROGRAM

Grand HYATT HOTEL 8.000 m<sup>2</sup>

Offices 20.000m<sup>2</sup>

Museum 3.000 m<sup>2</sup>

TOTAL SURFACE: 30.000m<sup>2</sup>

## CLIENT

MARIO SARADAR

## BUDGET

105M€

## PHASE

IN PROGRESS



This project is located in the neighborhood of Quarantine, and old part of the city where there used to be factory of treatment for trash and before sick people. Nowadays the quarter is knowing a fast progress of restructuring and its position overlooking the sea makes it very attractive for investments

The program is mixed and well adapt for this part of Beirut. The first 4 levels are of offices and from the 5th to the 15th floors is located the 4 stars hotel. Most of the room will have a close vision of the sea.

In the first two level of the cellar there is a museum which will contain the private art collection of the Client and a part for temporary exposition.





# RHONE ALPES - OFFICES CENTER

ARCHITECTURE

LYON, FRANCE 2016, BUILT

Competition, WON

## PROGRAM

Offices: 15.000m<sup>2</sup>

Medical Center for 700 indigents

12.000m<sup>2</sup>

Shops, Caffè,

TOTAL SURFACE: 27.000m<sup>2</sup>

## CLIENT

Rhones Alpes

## BUDGET

150M€

## PHASE

BUILT

The buildings play with the natural light, its main inspiration for its form and for internal organization of the spaces.

It creates very pleasant environments in order to affect positively on the moral of the indigent.

The main Lobby is the heart of the building and from it a walk in the vegetation lead to the roof

