

# BAOJI II COMMERCIAL CENTER

ARCHITECTURE

BAOJI ,CHINA 2020, UNDER CONSTRUCTION

Commission

## PROGRAM

Commercial Center

TOTAL SURFACE: 33.800m<sup>2</sup>

## CLIENT

Shanxi Baotai real estate development company

## BUDGET

35M€

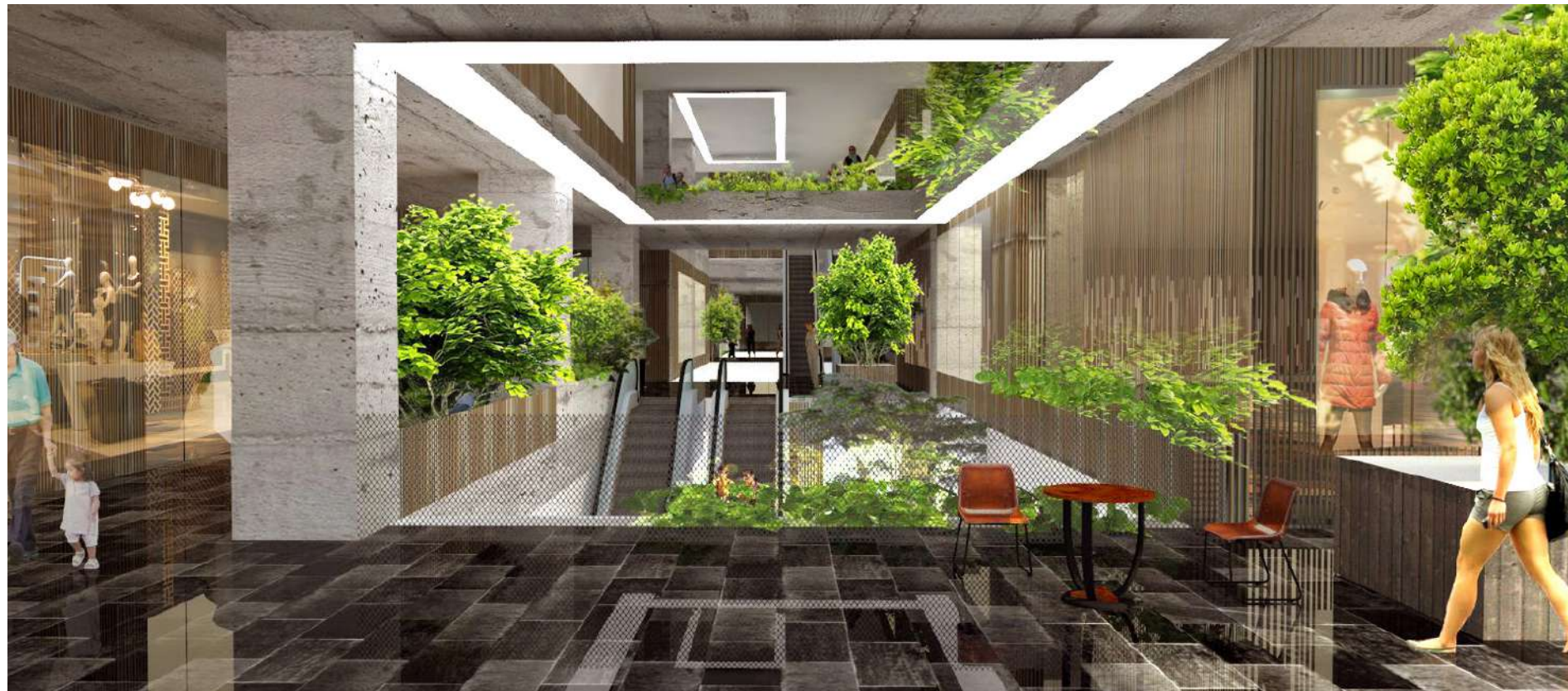
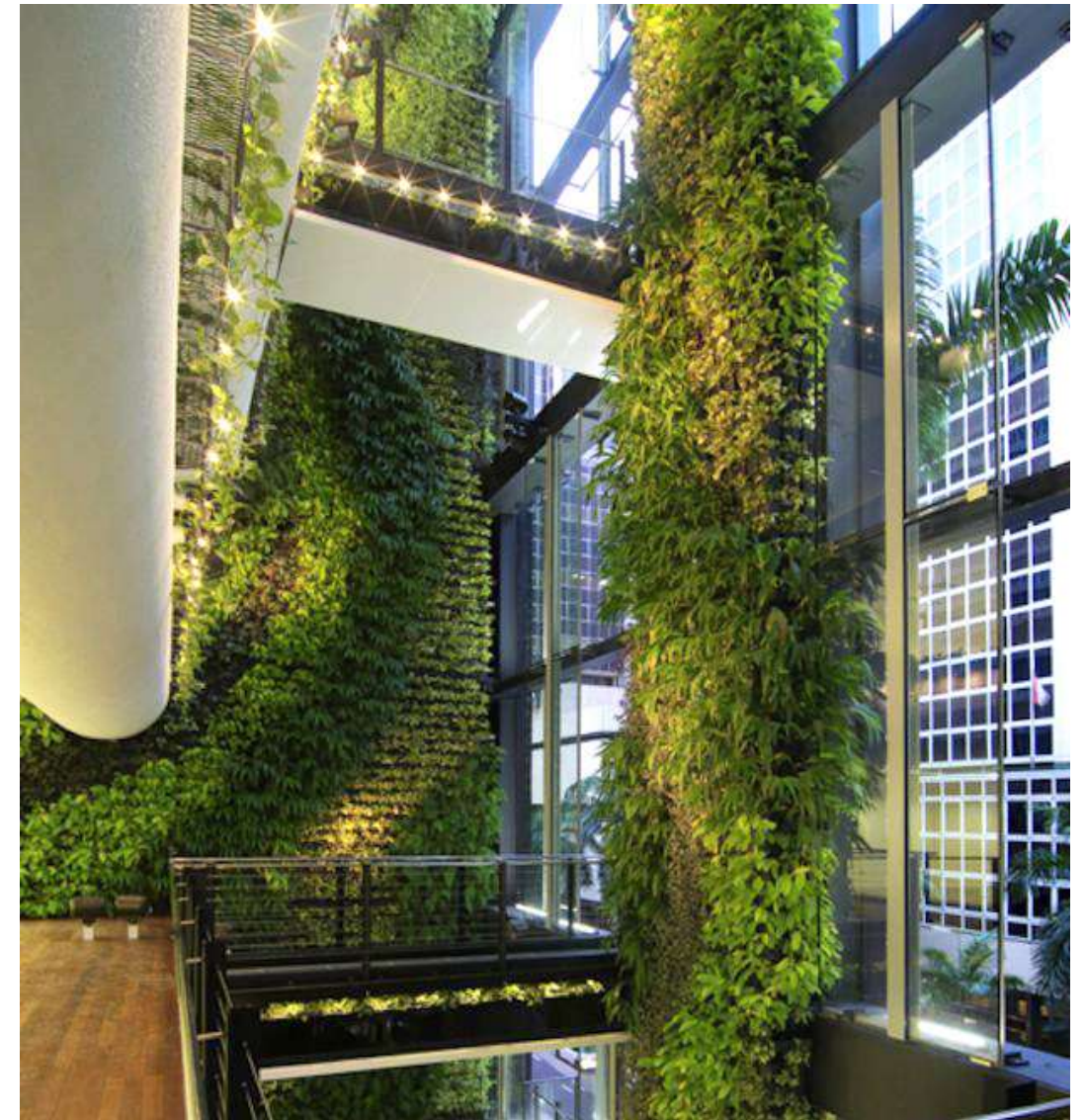
## PHASE

UNDER CONSTRUCTION



Baoji Commercial Center combines the artistic with the organic appeal to develop a unique spatial condition with ecological resources.

The project promotes a distinctive shopping experience among the metropolitan garden and multifunctional spaces for shop extension and public circulation.









# AL THANI COMMERCIAL CENTER

ARCHITECTURE

AL-KHOR, QATAR 2014, IN PROGRESS

Competition, WON

## PROGRAM

Commercial Center, Cinema (10 halls), Theater (1.500 seats),  
Kid playground (2.500m<sup>2</sup>), Dream Land Park (15.000m<sup>2</sup>)

TOTAL SURFACE: 450.000m<sup>2</sup>

## CLIENT

Qatar State

## BUDGET

720M€

## PHASE

IN PROGRESS

Located in Al-Khor, the project is a luxury commercial center containing different functions inside as retails, multipurpose theatre, a city of cinemas with 25 halls and different kind of services.

The concept is based on the harmonic waving of two slabs: the lower one, touching and rebounding on the floor, announcing with its movement the different entrances. The "roof wave" frames the building, creating a sinuous movement.

The different volumes intersecting the slabs can be used and their façade customized by different fashion brands in order to mark strongly their presence in the building.

The facade could be treated with a metal translucent mashrabiya inspired on the brand typical pattern.

