

# MAIN TOWER EQUESTRIAN CITY

ARCHITECTURE

AL-KHOR, QATAR, 2017 ON HOLD

Commission

## SURFACE

74.000 m<sup>2</sup> Offices, 8.000 m<sup>2</sup> retails, 28.000 m<sup>2</sup> Kempisky Hotel, 15.000 m<sup>2</sup> serviced apartments, 7.000 m<sup>2</sup> multifunction Zone, 12.000 m<sup>2</sup> Horse Museum.

TOTAL SURFACE: 140.000m<sup>2</sup>

## CLIENT

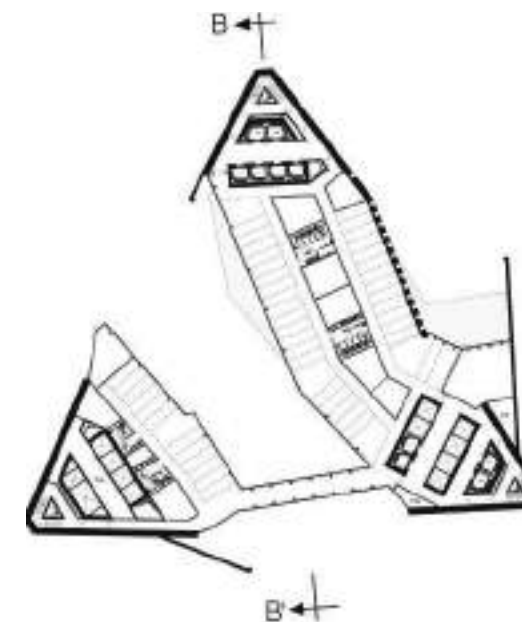
Qatar State

## BUDGET

1.200M€

## PHASE

Schematic Design, on Hold



It's a multifunction luxury building located in a huge urban development in the city of Al-Khor. The central position gives it a visibility from the neighborhoods all around and at the same time marks the presence of the entire project.

The building respects the architectural history of Al-Khor and, at the same time, wants to be a symbol of modernity. The main idea comes from the Arabian tent's movement, starting from the ground and reaching the sky.

It has been conceived respecting the "High Environmental Quality", which starts from a good understanding of the climate condition, the orientation and the sun impact. The external part of the project is composed by massive walls, of 1,5m width, where are dig opening where their form has been inspired by the Arabian Culture. The position and orientation of the external walls are studied in order to allow the opening of an internal glass façade, protected by the extreme daylight and heat.

The tower is composed by three major volumes connected by passerels at different levels. At the ground floor the three volumes allow circulations directly "under" the tower without being a barrier.



# NEW YORK PREFAB HOTEL

ARCHITECTURE / INTERIOR ARCHITECTURE

NEW YORK, USA, 2020, IN PROGRESS

Commission

## PROGRAM

Tower accommodating 120 hotel rooms, a restaurant, a spa.

## SURFACE

11.000 m<sup>2</sup>

## CLIENT

REVOLUTION PRECRAFTED / MONDRIAN Hotel

## BUDGET

42M€

## PHASE

IN PROGRESS

The all idea started when we wanted to find a new concept for a hotel, which could be entirely adaptable in every sites. We wanted a hotel who could be perfectly inserted in a downtown, and at the same time in the middle of countryside.

We wanted a program adaptable as well, follow the different necessities, of number of keys, services, and urban code (height limitations etc.)

We have been studying for two years the prefabrication techniques in order to apply it to the hospitality business.

The reason is the respect of the environment and the reduction of the construction schedule of around 35%, which allows the exploitation of the building to start much before.

At the same time we have been studying a technic which will allows a prefabricated hotel to be of the same quality of a high standard 5 stars hotel after one year of studying we finally found the right technic.

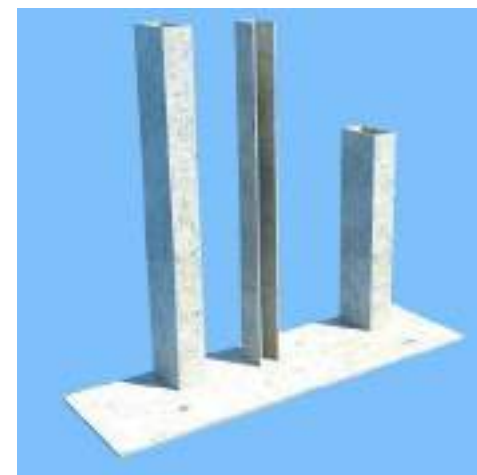


54th Street Study

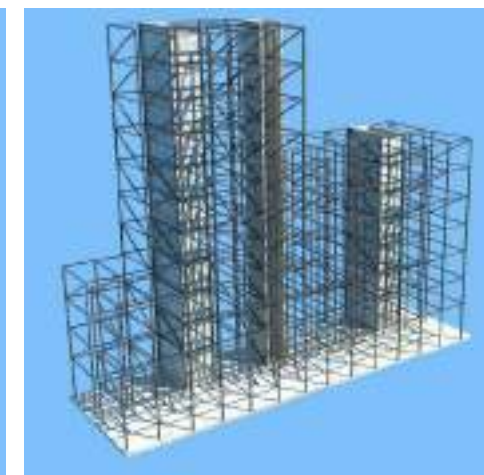
The Facade clothing can be changed in order to be always well adapted to its environment



Bowery Street Study



THE CORES ARE IN CONCRETE



AN EXO-SKELETON WILL BE THE SUPPORT FOR THE ROOMS



THE ROOMS, ASSEMBLED ELSEWHERE AT THE SAME TIME AS THE EXO-SKELETON IS BUILT, ARE INSERTED



# BATUALO PREFAB ECO HOTEL

ARCHITECTURE / INTERIOR ARCHITECTURE

BATUALO, PHILIPPINES 2017, UNDER CONSTRUCTION

Commission

## PROGRAM

Hotel accommodating 220 hotel rooms, restaurants, spa, convention center

## SURFACE

12.500 m<sup>2</sup>

## CLIENT

REVOLUTION PRECRAFTED / HILTON Hotel

## BUDGET

24M€

## PHASE

UNDER CONSTRUCTION



VIEW FROM THE POOL



CONSTRUCTION SITE



Located at Batulao, in the middle of an amazing nature, the four Stars hotel it is composed by several prefabricated element assembled in an EXO SKELTUM metal structure, which allows to create hanging gardens, opening, interruptions, in order to break the massive aspect for the building, and a promote a better connection with the surroundings.

In the exterior as per the interior design we use local materials and traditional pattern in order to create a dialogue with the local culture.

The project won the first prize for the New Ecofriendly Building in Manila region in 2020





MAIN LOBBY

MAIN RESTAURANT



LIBRARY



TYPICAL ROOM





# RENAISSANCE HOTEL

ARCHITECTURE

PARIS, FRANCE, 2009, BUILT

Commission

SURFACE

8.500 m<sup>2</sup>

CLIENT

Groupe Altarea — Cogedim

BUDGET

29.7M€

EXPLOITANT

MARRIOTT

Situated on avenue de Wagram in Paris, France, this new hotel occupies the site of the old Empire Theatre and is characterised by the interplay of undulating horizontal glass bands that seem to form a large interwoven glazed plait. These bay windows provide rooms with views over the Arc de Triomphe, place de l'Etoile and avenue des Ternes from the hotel rooms. The first two floors of the building are occupied by stores.







A large porch opens perspectives onto a sloping interior garden which leads to the Salle Wagram, a performance space built here in the 19th century, the facade of which has been reworked by Christian de Portzamparc, making the hall visible and accessible from the street and opening up the hotel building to the heart of the block.





# ANJY ER Eco RESORT

ARCHITECTURE

ZHEJANG, CHINA, 2017 BUILT

Commission

## SURFACE

Resort: 3.100 m<sup>2</sup>

40 Rooms, Restaurant, SPA

## BUDGET

12M€

## PHASE

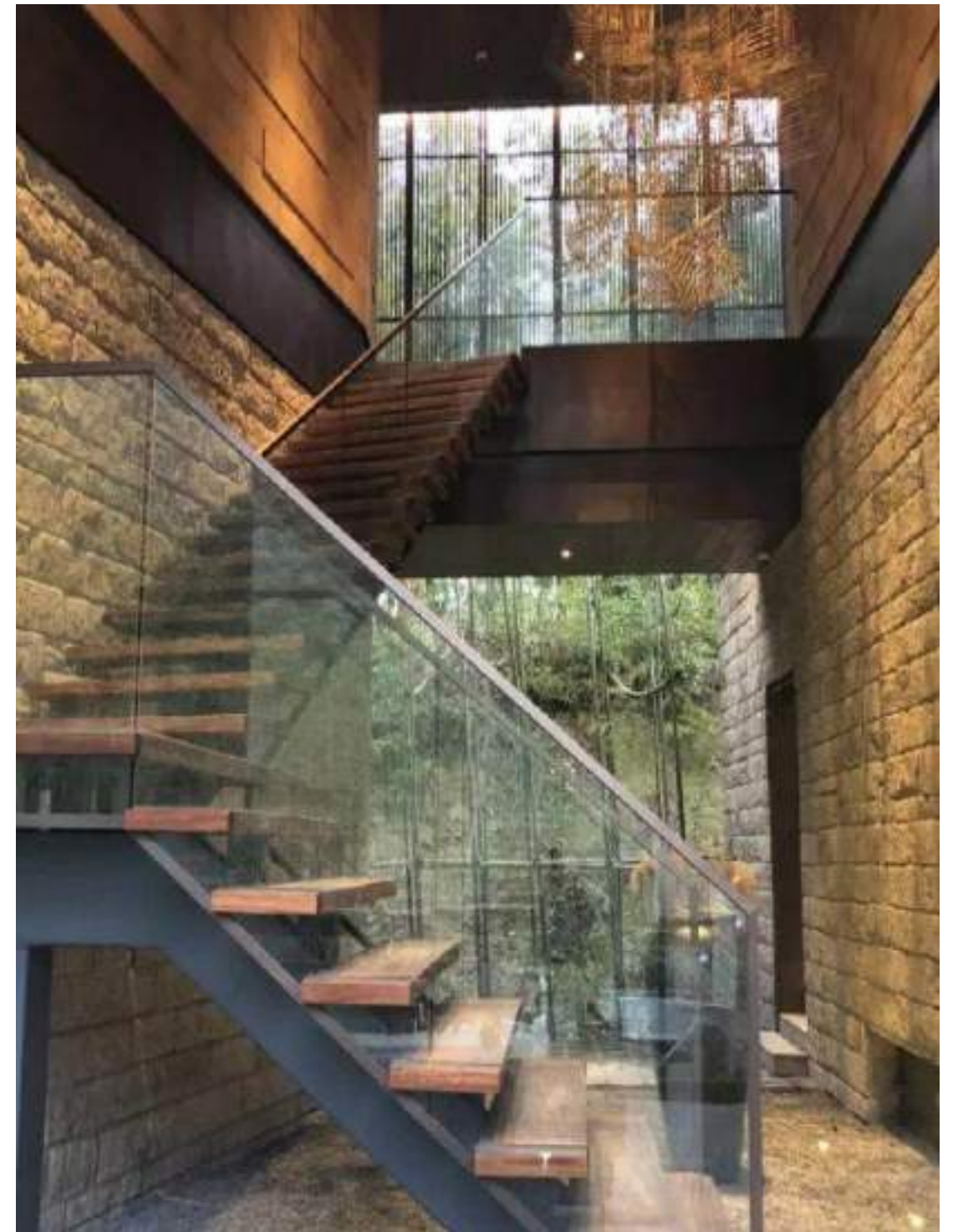
BUILT



The Anjy Er resort is a high quality ending resort where all the spaces have been treated in order to make the client feel in perfect comfort. The material the lights the feng shui positioning of all the different spaces

The two main volumes are completely integrated in the surrounding environment. The stone of the walls come from the same mountain where the building is standing







# RIYADH HOTEL AND COMMERCIAL CENTER

ARCHITECTURE /URBANISME

RIYADH ,KSA 2024, IN PROGRESS

Competition WON

## PROGRAM

Hotel, Art Center, Commercial Center, Spa

TOTAL SURFACE: 20.000m<sup>2</sup>

## PHASE

IN PROGRESS





## PROGRAM





# SHANGHAI SOFITE HOTEL

ARCHITECTURE

FENGXIAN, CHINA, 2022 UNDER CONSTRUCTION

Commission

## SURFACE

Total Surface: 100.000.m<sup>2</sup>

Hotel: 46.5000 m<sup>2</sup>

300 Rooms, Restaurant, SPA

Congress Center: 23.500 m<sup>2</sup>

Main hall 2.200 seats

Serviced Apartments: 30.000m<sup>2</sup>

## BUDGET

215M€

## PHASE

UNDER CONSTRUCTION

The project is located in Shanghai, Fengxian District, Zhuanghang Town. The north of the site is the Huangpu River, surrounded by conservation forests, and there are wild sika deer in the conservation forests. It is rare in the Shanghai area, and it is a superior land with natural landscape resources such as river view and forest view. It has great potential in the market of short vacations and micro-travels that do not leave Shanghai, and can compete with neighboring Jiangsu and Zhejiang for a part of weekend tourists. At the same time, the hotel will also be equipped with extremely rich business meeting resources. As a special business event venue, it has its own moat in the business hotel market in Shanghai. Covering an area of 40,108.4 square meters, with a total construction area of about 100,000 square meters, it has 293 rooms and two super-large conference halls, contributing an excellent meeting, vacation and micro-travel destination for Fengxian, Shanghai, and even the Yangtze River Delta region.







MAIN LOBBY





# FOUR SEASONS THE NAM HAI

ARCHITECTURE / INTERIOR ARCHITECTURE

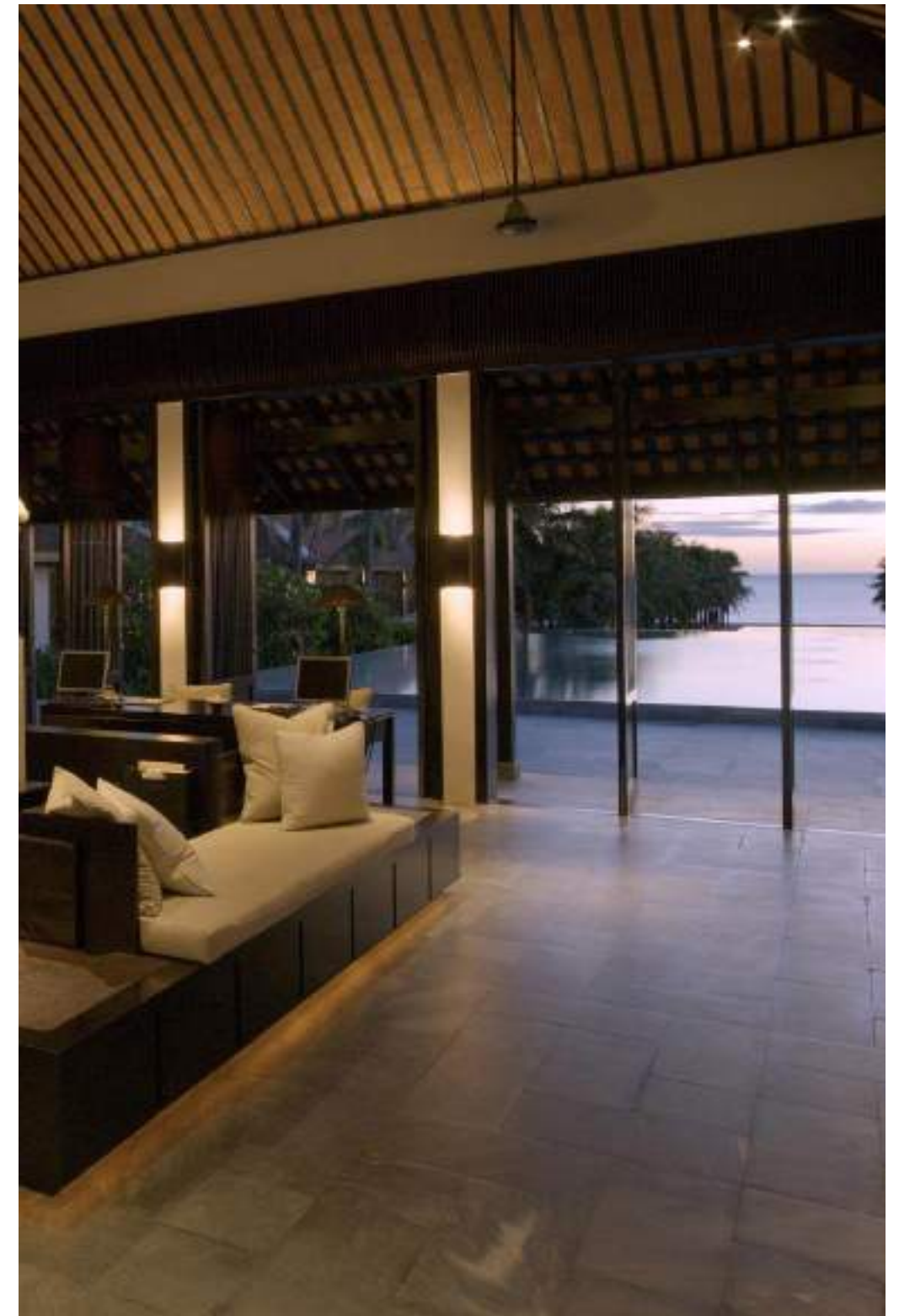
HOI AN, VIETNAM, 2022, BUILT

Commission

## PROGRAM

Resort 5 stars, 45 villas and 60 rooms

Total Area: 18.000 m<sup>2</sup>









# ANI SRI LANKA

ARCHITECTURE / INTERIOR ARCHITECTURE

DICKWELLA, SRI LANKA, 2020, BUILT

Commission

## PROGRAM

Hotel & Villas

Total Area: 3.500 m<sup>2</sup>









# PHUM BAITANG

ARCHITECTURE / INTERIOR ARCHITECTURE

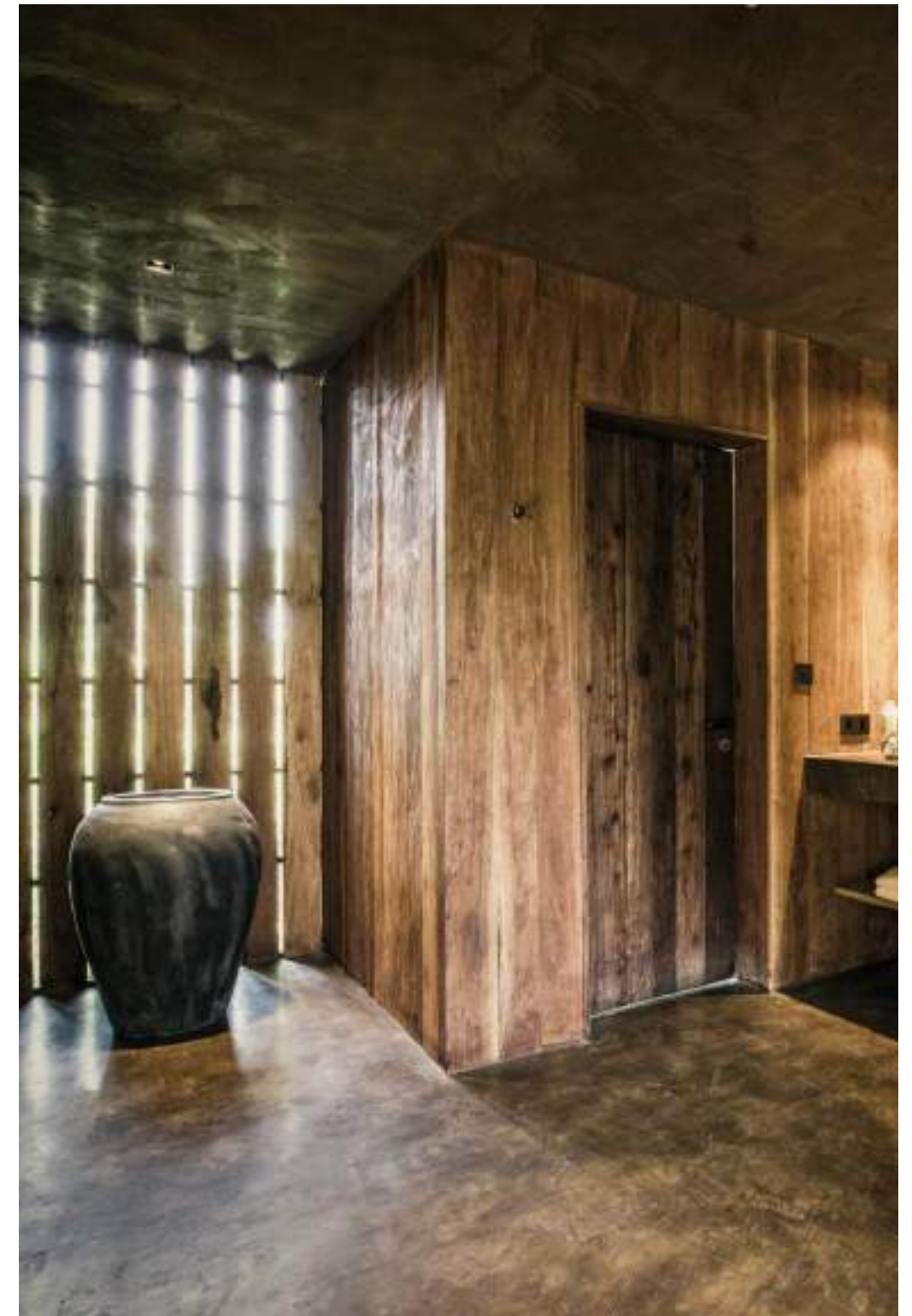
SIEMREAP, CAMBODIA, 2020, BUILT

Commission

## PROGRAM

Five Stars resort

Total Area: 3.500 m<sup>2</sup>









# BACCUS HOTEL

ARCHITECTURE / INTERIORS

QIONGLAI, CHINE 2021 UNDER CONSTRUCTION

Commission

## SURFACE

Total surface 6.430m<sup>2</sup>

10 Suites, Restaurant

## CLIENT

SHANGHAI BACCUS LIQUID

## BUDGET

18M€

## PHASE

UNDER CONSTRUCTION

This project includes the planning and construction of Bacchus brand experience, spirits and cocktail knowledge experience, conference center, small wine storage and supporting businesses and Bacchus boutique hotel.

The design scope of this scheme is the construction scope of the first phase delineated in the experience center land (227 mu), as well as the connection and design of the visiting route of the factory area.

THE HOTEL



VIEW FROM THE POOL



CONSTRUCTION SITE







THE RESTAURANT and the LOBBY AREA



THE MAIN LOBBY







## YANQUI Lake MARRIOTT HOTEL

Beijing China 20,000 M<sup>2</sup> Under construction

The project is situated inside the project of Yanqi Lake village.  
It has 200 rooms and suites, two restaurants, Spa and enclosed swimming pool of 1.500m<sup>2</sup>









# MAURITIUS CAESAR PALACE HOTEL

ARCHITECTURE / INTERIORS

BEIJING, CHINE 2024 IN PROGRESS

Commission

## SURFACE

Total surface 155.000m<sup>2</sup>

300 Rooms 7 Restaurants, SPA, CASINO, THEATER for 2000 seats

## BUDGET

220M€

## PHASE

IN PROGRESS

The project is located on the Mauritius Island. The program is composed by 250 rooms (including 30 private villas) a Spa of 3.000m<sup>2</sup>, restaurants, a casino of 25.000m<sup>2</sup> and a Theatre hosting 1.500 people.

The main concept is to create a path connecting each part of the program, separated from the others in order to form a village, reinforcing the identity of each part.

The architecture is inspired by the local architecture, using local material and construction technics.

An existing pond is transformed in the internal lake of sweet water.







THE MAIN ENTRANCE



THE SPA





# PELICAN CREST - HOTEL

ARCHITECTURE

DOHA, QATAR, 2016, IN PROGRESS

Commission

## PROGRAM

15.4910m<sup>2</sup> Hotel; 2000m<sup>2</sup> Villas; 39.220m<sup>2</sup> Serviced apartment;  
33.800m<sup>2</sup> Housing residential

## SURFACE

35.000 m<sup>2</sup>

## CLIENT

State of Qatar

## BUDGET

240M€

## PHASE

IN PROGRESS

We want to create a new identity in the city skyline, to point out the importance of this 7 stars hotel project.

The Mashrabiya Walls work like a shield to protect the south facade from the strongest sun and at the same time they allow the light to get in the building.

The Mashrabiya Walls have two different densities following the zone more exposed to the strong southern sun.

The room of the hotel to give users the greatest comfort, the users can enjoy the sea scenery in the room.





# PRIVATE PALACE

ARCHITECTURE / INTERIOR ARCHITECTURE

DOHA, QATAR, 2020, IN PROGRESS

Commission

## PROGRAM

Private Palace including Her and His Majilis, Museum.

Total Area: 18.000 m<sup>2</sup>



The architecture of the Palace respects the family needs shared between public and private life.  
The design of the facade is a reinterpretation of traditional code for arc and dimension in a more modern way.







# QATAR LUSAIL

ARCHITECTURE

DOHA, QATAR, 2017

Competition

## PROGRAM

Luxury Apartments, Services

Total Surface 25.000m<sup>2</sup>

## CLIENT

Qatar State

## BUDGET

40M€



Located in Doha, the project is a luxury housing building with two stores of public/private services.

Luxury for a building is a concept directly connected to uniqueness and beauty. The surrounding neighbourhood is composed by homogeneously treated squared shaped skyscrapers, the project marks its presence with a strong identity coming from a good interpretation of the site, the climate condition and the local culture.

The South façade, more exposed to the strong sunlight is protected by a metal skin façade, inspired from the local tradition moucharabieh. This filter allows to maintain optimal conditions in the interior while withstanding sun exposition, sand storms and high temperatures common in the Qatari capital.

On the North façade a vertical overlying evolution of elements and Arabian gardens give a strong identity to the building.





# NEW CAPITAL

URBANISME & OFF SITE ARCHITECTURE

BORNEO, Indonesia 2023, IN PROGRESS

Competition, WON

## PROGRAM

TOTAL SURFACE: 145.000m<sup>2</sup>

Offsite modules composing a neighborhood in the New Capital.

## CLIENT

WIKI investment

## BUDGET

75M€

## PHASE

IN PROGRESS

In 2019 we have participated in a conference in the New Capital for Indonesia, which will be located on the Borneo Island.

After discovering the timing of the construction, we proposed the solution of OFFSITE construction for the housing building, and we signed an MOU with the government and the major contractor WIKI.

We developed with DMD Modular, and off-site construction factory situated in Poland, a concept that will allow to create a "right" number of module and interesting composition of the building.

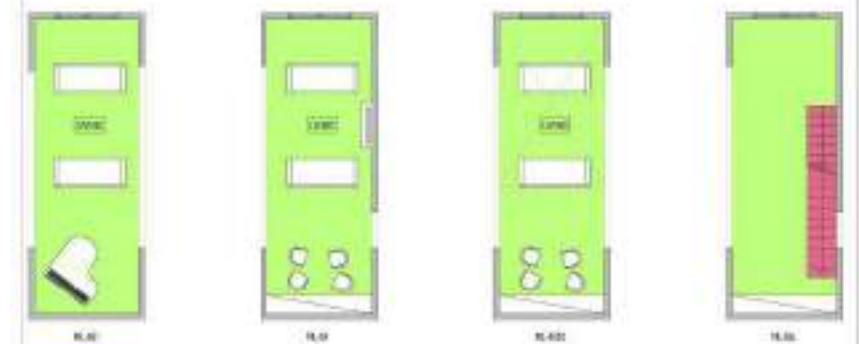
We wanted to create with the same amount of modules different shape for the building, in order to reinforce the identity of each building.



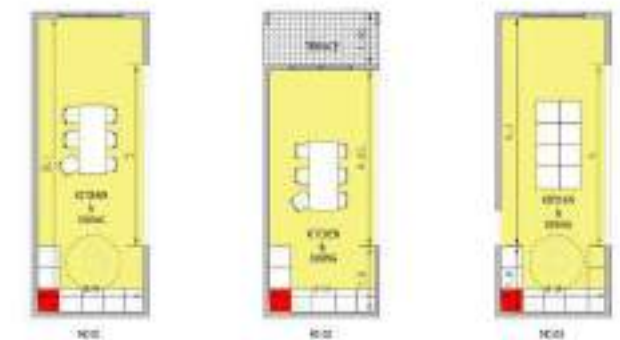
## Bedroom modules



## Living modules



## Kitchen modules



## Studio/Library modules







TYPICAL APARTMENTS PLANS

